

# AccuTEC



Meeting your price, technology & performance requirements

AccuTEC Digital Weighing System Catalog



- + High Precision
- + Durable
- + Fast response
- + Good cornering

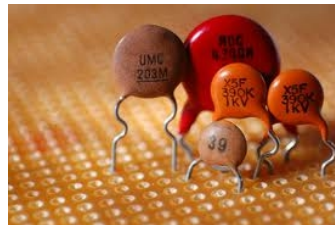


## High Precision Weighing Scale

The new UWA industrial scale from AccuTEC is a compact industrial scale which combines two powerful weighing technologies : strain gauge loadcell technology and verified reading resolution of up to 30,000. Readability ranges from 0.1g to 2g.

The new UWA offers exceptional performance features and, despite its wide variety of functions, is a very easy-to-operate industrial scale. It is extremely rugged and resistant, and comes with an array of features to meet the majority of user requirements in industrial sectors. The rugged design is very well suitable for daily use in harsh environment.

The AccuTEC UWA series weighing scales come with a 2 years warranty on manufacturing defects. They constitute a wide and varied assortment of precise industrial scales of weighing ranges from 3Kg to 30Kg.



- + High Precision
- + Durable
- + Fast response
- + Good cornering



## High Precision Weighing Scale



### Specification:

Model	UWA-B-003	UWA-B-006	UWA-B-012	UWA-B-030
Capacity	3Kg	6Kg	12Kg	30Kg
Division	0.2g	0.5g	1g	2g
Pan Size	285 x 240 mm			

Model	UWA-C-003	UWA-C-006	UWA-C-015	UWA-C-030
Capacity	3Kg	6Kg	15Kg	30Kg
Division	0.1g	0.2g	0.5g	1g
Pan Size	285 x 240 mm			



- + Accurate Counting
- + High Precision
- + Durable
- + Fast response
- + Good cornering

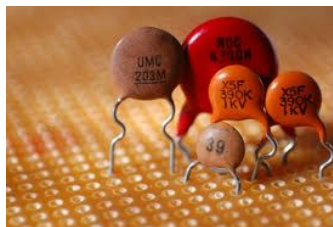


## High Precision Counting Scale

The new UCA industrial scale from AccuTEC is a compact industrial scale in which combines two powerful weighing technologies : strain gauge loadcell technology and verified reading resolution of up to 30,000. Readability ranges from 0.1g to 2g

The new UCA offers exceptional performance features and, despite its wide variety of functions, is a very easy-to-operate industrial scale. It is extremely rugged and resistant, and comes with an array of features to meet the majority of user requirements in industrial sectors. The rugged design is very well suitable for daily use in harsh environment.

The AccuTEC UCA series weighing scales come with a 2 years warranty on manufacturing defects. They constitute a wide and varied assortment of precise industrial scales of weighing ranges from 3Kg to 30Kg.





- + Accurate Counting
- + High Precision
- + Durable
- + Fast response
- + Good cornering



## High Precision Counting Scale



- ◆
- ◆
- ◆
- ◆
- ◆ " # #
- ◆ \$ %
- ◆ \$ &

!



### Specification:

Model	UCA-B-003	UCA-B-006	UCA-B-012	UCA-B-030
Capacity	3Kg	6Kg	12Kg	30Kg
Division	0.2g	0.5g	1g	2g
Pan Size	285 x 240 mm			

Model	UCA-C-003	UCA-C-006	UCA-C-015	UCA-C-030
Capacity	3Kg	6Kg	15Kg	30Kg
Division	0.1g	0.2g	0.5g	1g
Pan Size	285 x 240 mm			



- High Precision +
- Durable +
- Fast response +
- Good cornering +

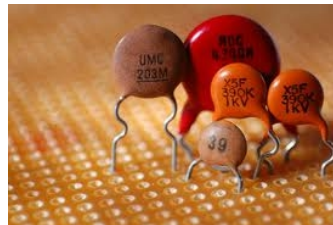


## High Precision Platform Weighing Scale

The new BSWC industrial scale from AccuTEC is a compact industrial scale which combines two powerful weighing technologies : strain gauge loadcell technology and verified reading resolution of up to 30,000. Readability ranges from 1g to 50g.

The new BSWC offers exceptional performance features and, despite its wide variety of functions, is a very easy-to-operate industrial scale. It is extremely rugged and resistant, and comes with an array of features to meet the majority of user requirements in industrial sectors. The rugged weighing platforms are very well suitable for daily use in harsh environment.

The AccuTEC BSWC series bench and stand scales come with a 2 years warranty on manufacturing defects. They constitute a wide and varied assortment of precise industrial scales of weighing ranges from 30Kg to 500Kg and two choices of platform sizes Option-1 : 420 x 520 mm and Option-2 : 380 x 480 mm.





- High Precision +
- Durable +
- Fast response +
- Good cornering +



## High Precision Platform Weighing Scale

- ◆ :
- ◆ ! " # \$ %
- ◆ & ' ' (
- ◆ \$ ( ) \* + , + - \$ .
- ◆ & /
- ◆ ' ' 0
- ◆ ( 1 ' /
- ◆ 2 , )

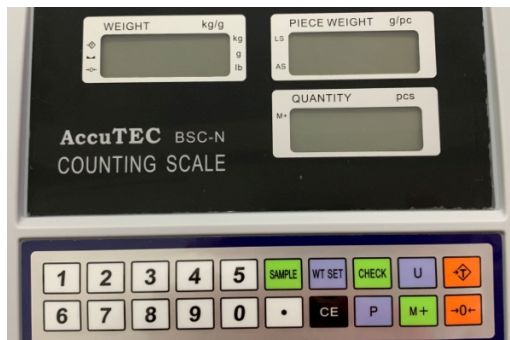


### Specification:

Model	BSWN-B-PF-60	BSWN-B-PF-150	BSWN-B-PF-300	BSWN-B-PF-500
Capacity	60Kg	150Kg	300Kg	500Kg
Division	5g	10g	20g	50g
Pan Size	Option-1 420 x 520 mm Option-2 380 x 480 mm			

Model	BSWN-C-PF-30	BSWN-C-PF-60	BSWN-C-PF-150	BSWN-C-PF-300
Capacity	30Kg	60Kg	150Kg	300Kg
Division	1g	2g	5g	10g
Pan Size	Option-1 420 x 520 mm Option-2 380 x 480 mm			





- Accurate Counting +
- High Precision +
- Durable +
- Fast response +
- Good conering +

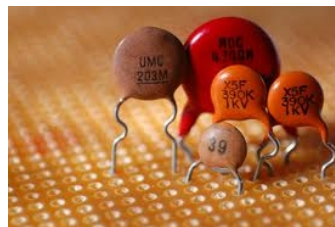


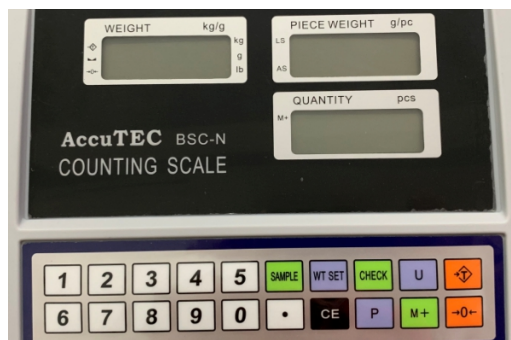
## High Precision Platform Counting Scale

The new BSC industrial scale from AccuTEC is a compact industrial scale which combines two powerful weighing technologies : strain gauge loadcell technology and verified reading resolution of up to 30,000. Readability ranges from 2g to 50g.

The new BSC offers exceptional performance features and, despite its wide variety of functions, is a very easy-to-operate industrial scale. It is extremely rugged and resistant, and comes with an array of features to meet the majority of user requirements in industrial sectors. The rugged weighing platforms are very well suitable for daily use in harsh environment.

The AccuTEC BSC series bench scales come with a 2 years warranty on manufacturing defects. They constitute a wide and varied assortment of precise industrial scales of weighing ranges from 30Kg to 500Kg and two choices of platform sizes Option-1 : 420 x 520 mm and Option-2 : 380 x 480 mm.





- Accurate Counting +
- High Precision +
- Durable +
- Fast response +
- Good conering +



## High Precision Platform Counting Scale

- ◆ :
- ◆ ! " ##\$
- ◆ % & & ' ( ) \* + \* , # -
- ◆ %
- ◆ & & /
- ◆ ' 0 & .
- ◆ 1 + (



### Specification:

Model	BSCN-B-PF-60	BSCN-B-PF-150	BSCN-B-PF-300	BSCN-B-PF-500
Capacity	60Kg	150Kg	300Kg	500Kg
Division	5g	10g	20g	50g
Pan Size	Option-1 420 x 520 mm Option-2 380 x 480 mm			

Model	BSCN-C-PF-30	BSCN-C-PF-60	BSCN-C-PF-150	BSCN-C-PF-300
Capacity	30Kg	60Kg	150Kg	300Kg
Division	1g	2g	5g	10g
Pan Size	Option-1 420 x 520 mm Option-2 380 x 480 mm			



- + IP66 Waterproof
- + High Precision
- + Durable
- + Fast response
- + Good cornering



## High Precision Waterproof Platform Weighing Scale

### Features:

- ◆ Load cell with high accuracy
- ◆ Stainless steel construction. (Stainless steel load cell and indicator)
- ◆ 20mm bright green LED display
- ◆ Direct AC/DC power
- ◆ Kg & pound conversion
- ◆ With counting function
- ◆ Auto zero-tracking, tare, memory & auto calibration functions
- ◆ RS232 interface. (RS485 optional)
- ◆ Anti-corrosive and waterproof (IP66)



### Specification:

Model	BSW-S-PF-60	BSW-S-PF-150	BSW-S-PF-300
Capacity	60Kg	150Kg	300Kg
Division	10g	20g	50g
Pan Size	Option-1 420 x 520 mm Option-2 380 x 480 mm		







- + High Precision
- + Durable
- + Fast response

## Crane Scale

The new UT crane scale from AccuTEC is a compact industrial scale which combines two powerful weighing technologies : strain gauge loadcell technology and verified reading resolution of up to 10,000. Readability ranges from 0.5Kg to 5Kg.

The new UT crane scale offers exceptional performance features and, despite its wide variety of functions, is a very easy-to-operate industrial scale. It is extremely rugged and resistant, and comes with an array of features to meet the majority of user requirements in industrial sectors. These rugged crane scales are very well suitable for daily used in harsh environment.

The AccuTEC UT series crane scale comes with a 2 years warranty on manufacturing defects. They constitute a wide and varied assortment of precise weighing ranges from 1,000Kg to 15,000Kg.





- + High Precision
- + Durable
- + Fast response

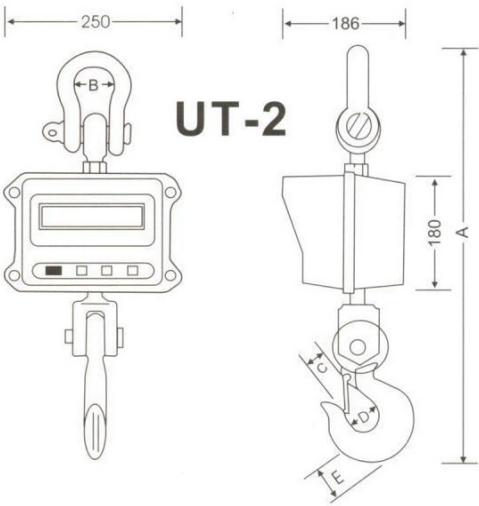
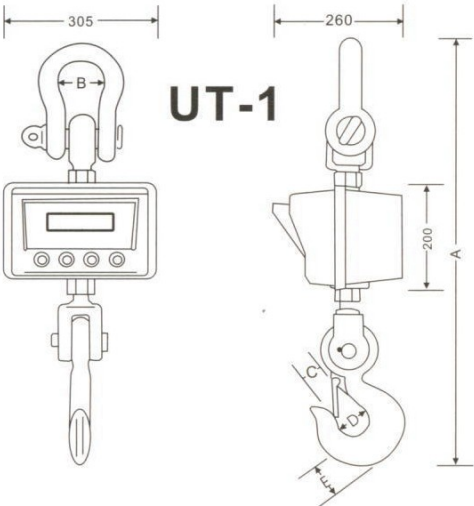
Crane Scale

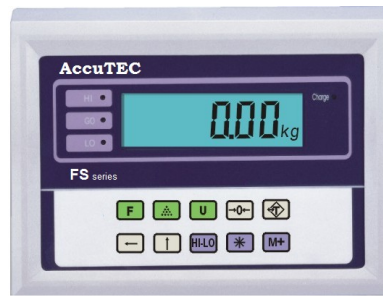
- ◆
- ◆
- ◆
- ◆
- ◆ ! " #
- ◆ ! \$ % & '()
- ◆ % \*
- ◆ ' , -
- ◆ + \* + ' , -



Specification:

Model	UT-1-010	UT-1-020	UT-1-030	UT-2-050	UT-2-100	UT-2-150
Capacity	1,000Kg	2,000Kg	3,000Kg	5,000Kg	10,000Kg	15,000Kg
Division	0.5Kg	1Kg	1Kg	2Kg	5Kg	5Kg





- + High Precision
- + Durable
- + Fast response
- + Good cornering

## High Precision Floor Scale

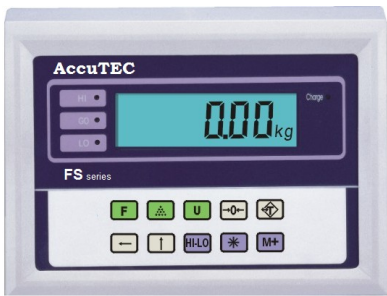
The new FS industrial floor scale from AccuTEC is a rugged and reliable weighing scale which combines two powerful weighing technologies : strain gauge loadcell technology and verified reading resolution of up to 4,000. Capacity ranges from 1,000Kg to 3,000Kg

The new FS offers exceptional performance features and, despite its wide variety of functions, is a very easy-to-operate industrial scale. It is extremely rugged and resistant, and comes with an array of features to meet the majority of user requirements in industrial sectors. The rugged weighing platforms are very well suitable for daily use in harsh environment.

The AccuTEC FS series floor scales come with a 2 years warranty on manufacturing defects.







- + High Precision
- + Durable
- + Fast response
- + Good cornering

High Precision Floor Scale

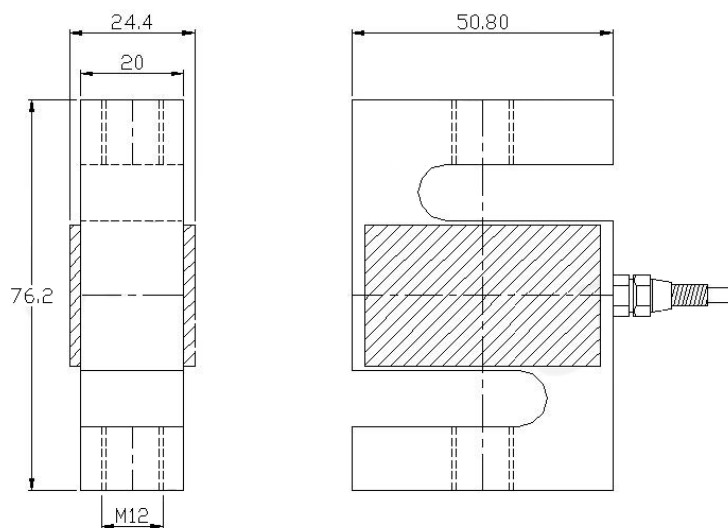
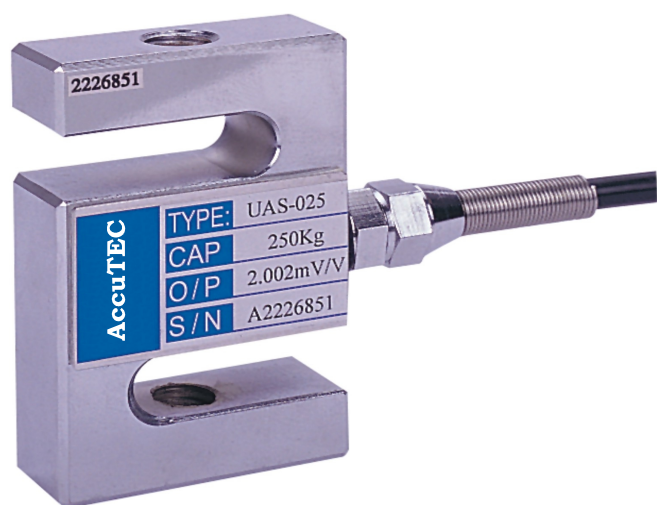
- ◆ :
- ◆
- ◆
- ◆ ! "
- ◆
- ◆ # \$ %
- ◆ &
- ◆ !!
- ◆ ' ! %
- ( % )



Specification:

Model	FS-001	FS-002	FS-003
Capacity	1,000Kg	2,000Kg	3,000Kg
Division	0.5Kg	0.5Kg	1Kg
Platform Size (m)	1 x 1	1.2 x 1.2	1.5 x 1.5

## Model: UAS



AccuTEC load cells are designed to meet the most stringent accuracy requirements. UAS universal load cells are available in the capacities 250 Kg to 750 Kg. They offer total alloy steel construction and complete hermetic sealing, making them suitable for use in the toughest industrial environments.

### Features:

- \* High accuracy
- \* Total alloy steel construction
- \* Complete hermetic sealing
- \* Easy cable replacement
- \* Complete range of loading hardware available
- \* IP 66

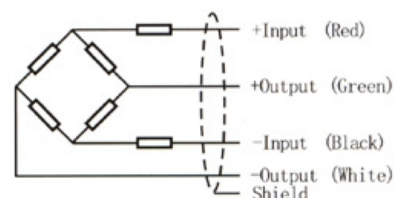
### Application areas:

- \* Tensile testing
- \* Industrial scales

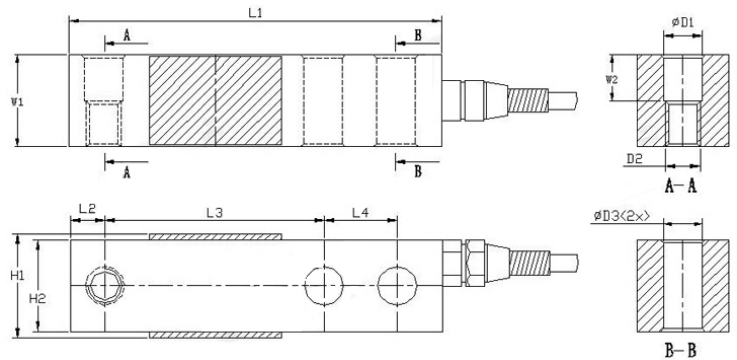
Maximum Capacity	Kg	250	500/700
Material		Alloy steel	
Recommended Excitation	V	10	
Maximum Excitation	V	15	
Rated Output(=RO)	mV/V	2 ± 0.05	3 ± 0.0025
Zero Balance	%RO	± 0.030	
Creep Error (20minutes)	%RO	± 0.04	
Repeatability	%RO	± 0.02	
Input Resistance	Ω	390 ± 3	
Output Resistance	Ω	350 ± 3	

### Wiring:

- \* The load cell is provided with a shielded, 4 Conductor cable
- \* Cable length: 4m
- \* Cable diameter: 6mm



## Model: UES



Type	L1	L2	L3	L4	H1	H2	W1	W2	D1	D2	D3
UES-250KG	129.5	12	76.2	25.4	36.1	31.7	31.7	0	13.5	M12	13.5
UES-0.5T/1T/2T	129.5	12	76.2	25.4	36.1	31.7	31.7	16	13.5	M12	13.5
UES-2.5T/5T	172	19.05	95.25	38.1	42.5	38.1	38.1	19	19.8	M18	19.8
UES-10T	255.5	25.4	123.9	50.8	55.2	50.8	50.8	25	26	M24	26

AccuTEC load cells are designed to meet the most stringent accuracy requirements. UES load cells are available in the capacities 0.25 t to 10 t. They offer total alloy steel construction, making them suitable for use in the toughest industrial environments. It allows very low profile platform design and offers advantages in all kind of weighing applications.

### Features:

- \* Alloy steel construction
- \* Low profile
- \* Easy cable replacement
- \* Complete range of loading hardware available
- \* IP 66

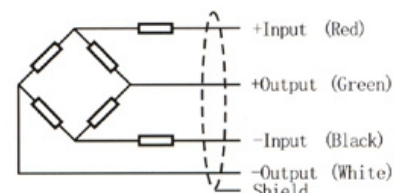
### Application areas:

- \* Platform scale
- \* Silo and tank weighing

<b>Maximum Capacity</b>	<b>t</b>	0.25/0.5/1/2.5/5/10
<b>Material</b>		Alloy steel
<b>Recommended Excitation</b>	<b>V</b>	10
<b>Maximum Excitation</b>	<b>V</b>	15
<b>Rated Output(=RO)</b>	<b>mV/V</b>	3 ± 0.0025
<b>Zero Balance</b>	<b>%RO</b>	± 0.03
<b>Creep Error (20minutes)</b>	<b>%RO</b>	± 0.03
<b>Repeatability</b>	<b>%RO</b>	± 0.02
<b>Input Resistance</b>	<b>Ω</b>	390 ± 3
<b>Output Resistance</b>	<b>Ω</b>	350 ± 3

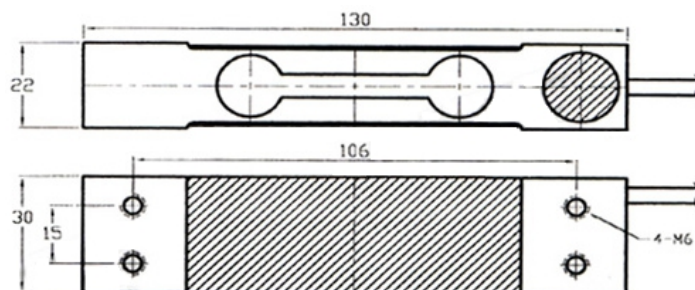
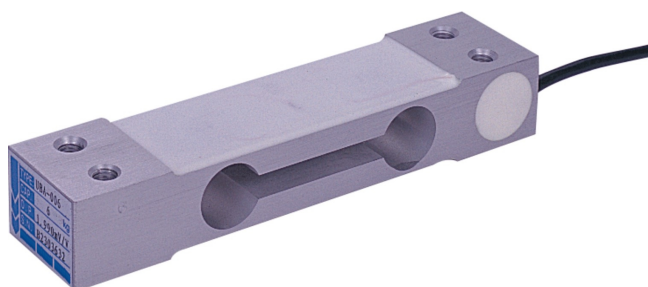
### Wiring:

- \* The load cell is provided with a shielded, 4 Conductor cable
- \* Cable length: 6m
- \* Cable diameter: 6mm





Model: UBA



AccuTEC load cells are designed to meet the most stringent accuracy requirements. UBA load cells are available in the capacities 3 Kg to 200 Kg. They offer total aluminium construction, making them suitable for use in the toughest industrial environments. It allows very low profile platform design and offers advantages in all kind of weighing applications.

#### Features:

- \* Aluminium construction
- \* Low profile
- \* Easy cable replacement
- \* Complete range of loading hardware available
- \* IP 66

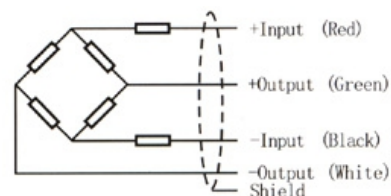
#### Application areas:

- \* Pricing scale
- \* Counting scale
- \* Weighing Scale

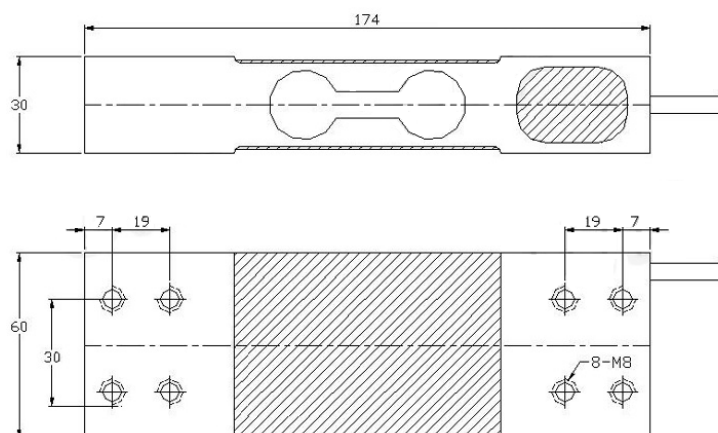
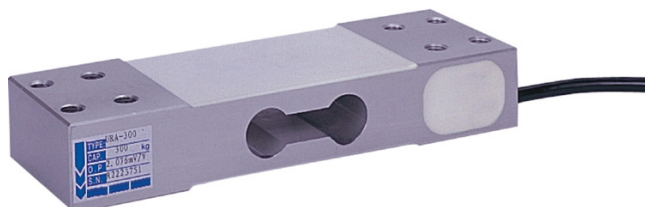
Maximum Capacity	Kg	3/6/12/20/35
Material		Aluminium
Recommended Excitation	V	10
Maximum Excitation	V	15
Rated Output(=RO)	mV/V	$2 \pm 0.05$
Zero Balance	%RO	$\pm 0.03$
Creep Error (20minutes)	%RO	$\pm 0.025$
Repeatability	%RO	$\pm 0.02$
Input Resistance	$\Omega$	$394 \pm 3$
Output Resistance	$\Omega$	$350 \pm 3$

#### Wiring:

- \* The load cell is provided with a shielded wire round cable
- \* Cable length: 45cm
- \* Cable diameter: 6mm
- \* The shield is connected to the load cell body



## Model: URA



AccuTEC load cells are designed to meet the most stringent accuracy requirements. URA load cells are available in the capacities 100 Kg to 750 Kg. They offer total aluminium steel construction, making them suitable for use in the toughest industrial environments. It allows very low profile platform design and offers advantages in all kind of weighing applications.

### Features:

- \* Aluminium construction
- \* Low profile
- \* Easy cable replacement
- \* Complete range of loading hardware available
- \* IP 66

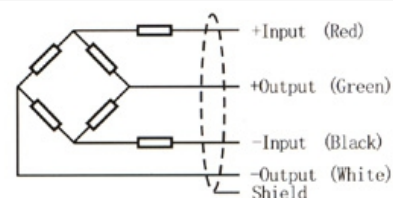
### Application areas:

- \* Bench scale
- \* Platform scale

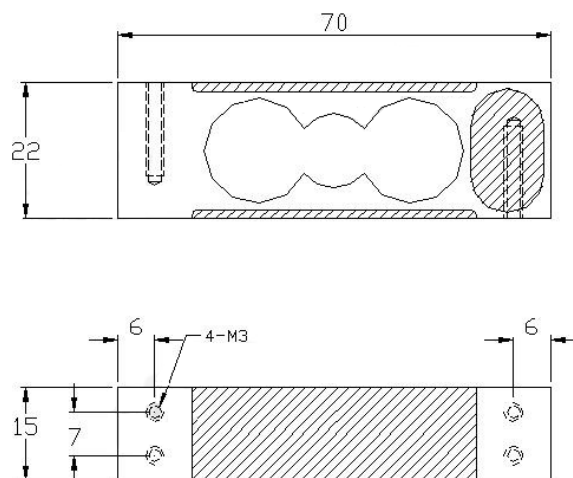
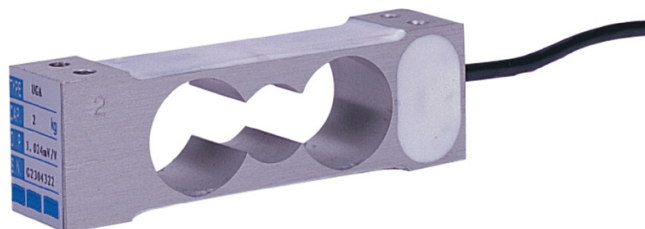
Maximum Capacity	Kg	100/150/200/300/500/750
Material		Aluminium
Recommended Excitation	V	10
Maximum Excitation	V	15
Rated Output(=RO)	mV/V	$2 \pm 0.05$
Zero Balance	%RO	$\pm 0.03$
Creep Error (20minutes)	%RO	$\pm 0.025$
Repeatability	%RO	$\pm 0.02$
Input Resistance	$\Omega$	$414 \pm 3$
Output Resistance	$\Omega$	$350 \pm 3$

### Wiring:

- \* The load cell is provided with a shielded wire round cable
- \* Cable length: 45cm
- \* Cable diameter: 6mm
- \* The shield is connected to the load cell body



## Model: UGA



AccuTEC load cells are designed to meet the most stringent accuracy requirements. UGA load cells are available in the capacities 0.6 Kg to 3 Kg. They offer total aluminium construction, making them suitable for use in the toughest industrial environments. It allows very low profile platform design and offers advantages in all kind of weighing applications.

### Features:

- \* Aluminium construction
- \* Low profile
- \* Easy cable replacement
- \* Complete range of loading hardware available
- \* IP 66

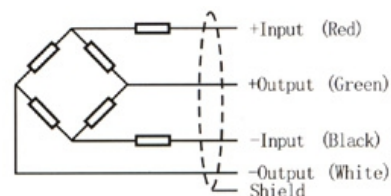
### Application areas:

- \* Pricing scale
- \* Counting scale
- \* Weighing Scale

Maximum Capacity	Kg	0.6/1/1.2/1.5/3
Material		Aluminium
Recommended Excitation	V	10
Maximum Excitation	V	15
Rated Output(=RO)	mV/V	$1 \pm 0.1$
Zero Balance	%RO	$\pm 0.05$
Creep Error (20minutes)	%RO	$\pm 0.05$
Repeatability	%RO	$\pm 0.02$
Input Resistance	$\Omega$	$394 \pm 3$
Output Resistance	$\Omega$	$350 \pm 3$

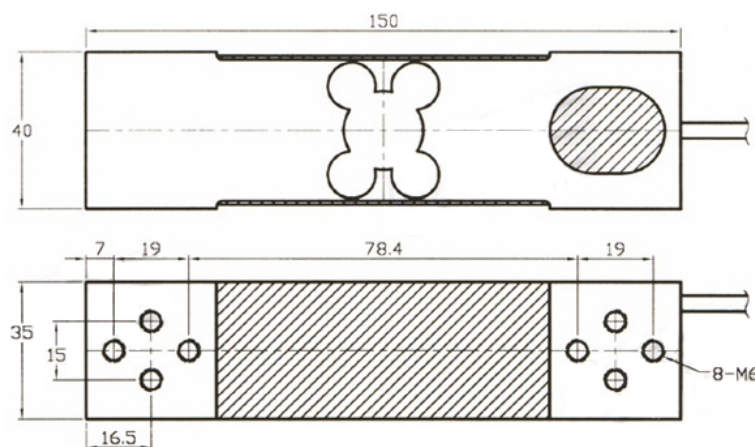
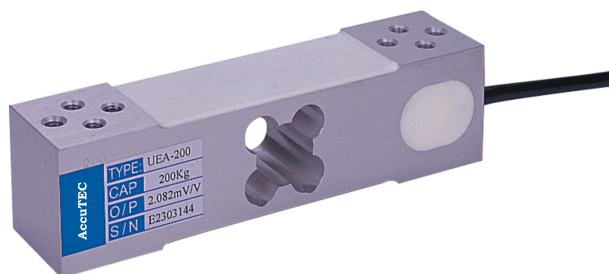
### Wiring:

- \* The load cell is provided with a shielded wire round cable
- \* Cable length: 48cm
- \* Cable diameter: 3mm
- \* The shield is connected to the load cell body





Model: UEA



AccuTEC load cells are designed to meet the most stringent accuracy requirements. UEA load cells are available in the capacities 35 Kg to 500 Kg. They offer total aluminium construction, making them suitable for use in the toughest industrial environments. It allows very low profile platform design and offers advantages in all kind of weighing applications.

#### Features:

- \* Aluminium construction
- \* Low profile
- \* Easy cable replacement
- \* Complete range of loading hardware available
- \* IP 66

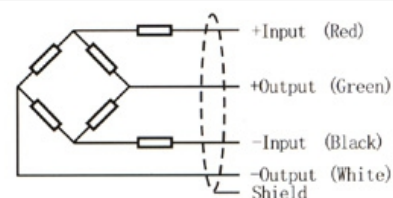
#### Application areas:

- \* Bench scale
- \* Platform scale

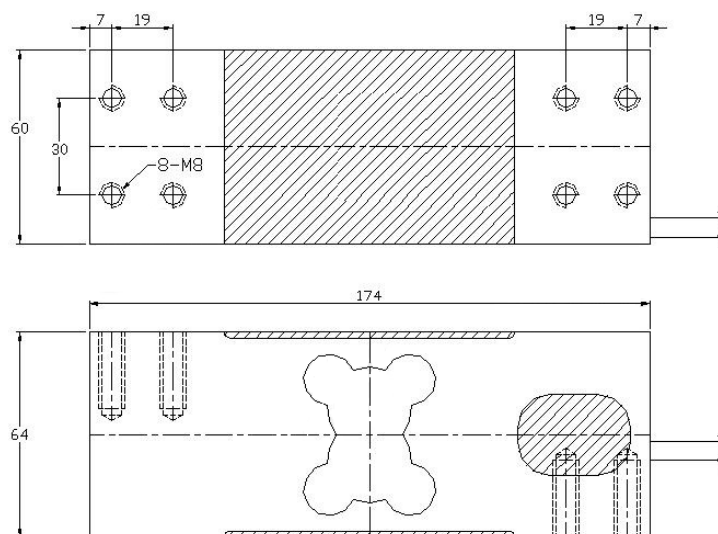
Maximum Capacity	Kg	35/60/100/200/300/500
Material		Aluminium
Recommended Excitation	V	10
Maximum Excitation	V	15
Rated Output(=RO)	mV/V	$2 \pm 0.05$
Zero Balance	%RO	$\pm 0.03$
Creep Error (20minutes)	%RO	$\pm 0.025$
Repeatability	%RO	$\pm 0.02$
Input Resistance	$\Omega$	$402 \pm 3$
Output Resistance	$\Omega$	$350 \pm 3$

#### Wiring:

- \* The load cell is provided with a shielded wire round cable
- \* Cable length: 2m
- \* Cable diameter: 6mm
- \* The shield is connected to the load cell body



## Model: UDA



AccuTEC load cells are designed to meet the most stringent accuracy requirements. UDA load cells are available in the capacities 60 Kg to 1,000 Kg. They offer total aluminium construction, making them suitable for use in the toughest industrial environments. It allows very low profile platform design and offers advantages in all kind of weighing applications.

### Features:

- \* Aluminium steel construction
- \* Low profile
- \* Easy cable replacement
- \* Complete range of loading hardware available
- \* IP 66

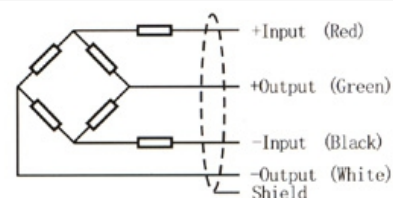
### Application areas:

- \* Bench scale
- \* Platform scale

Maximum Capacity	Kg	60/100/150/200/300/500/750/1000
Material		Aluminium
Recommended Excitation	V	10
Maximum Excitation	V	15
Rated Output(=RO)	mV/V	$2 \pm 0.05$
Zero Balance	%RO	$\pm 0.03$
Creep Error (20minutes)	%RO	$\pm 0.025$
Repeatability	%RO	$\pm 0.02$
Input Resistance	$\Omega$	$414 \pm 3$
Output Resistance	$\Omega$	$350 \pm 3$

### Wiring:

- \* The load cell is provided with a shielded wire round cable
- \* Cable length: 2m
- \* Cable diameter: 6mm
- \* The shield is connected to the load cell body





Elite Industrial Park,  
12, Jalan Gitar 33/3, Seksyen 33,  
40400 Shah Alam, Selangor  
Phone : +603-51212673  
Email : enquiry@ lesoshoppe.com